

## CD® COUPLINGS SINGLE FLEX STAINLESS STEEL

The Single Flex Composite Disc Stainless Steel coupling is an excellent choice for zero backlash applications that require stainless steel. The hub and hardware are made from 300 Series stainless steel and the composite disc material is highly resistant to many harsh chemicals.

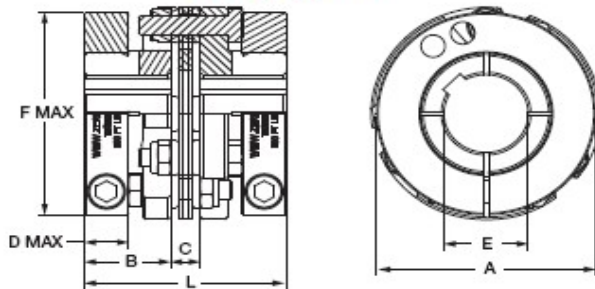
If your needs require a size of coupling that is not shown below, please contact Zero-Max.



- Consult factory for speeds higher than those listed and balancing requirements, if necessary.
- Consult factory for higher torque and higher torsional stiffness couplings.

	Performance Information													
	Continuous Rated Torque		Maximum Rated Torque		Torsional Stiffness		Maximum Speed		Misalignments		A Hub		Clamped Hub	
	In.-lbs (Nm)	In.-lbs (Nm)	In.-lbs/deg (Nm/Rad)	A Axis (RPM)	Clamp Style (RPM)	Angular (Degrees)	Parallel (Inch (mm))	Axis (Inch (mm))	Unit Weight at Max Bore (Lb. (kg))	Unit inertia at Max Bore (lb.-in <sup>2</sup> (kg-cm <sup>2</sup> ))	Unit Weight at Max Bore (Lb. (kg))	Unit inertia at Max Bore (lb.-in <sup>2</sup> (kg-cm <sup>2</sup> ))		
6A30-SS 6A30C-SS	800 (90)	1,600 (181)	6,838 (42,978)	9,000	8,000	3	0.010 (0.3)	0.000 (1.3)	2.0 (0.9)	1.9 (0.5)	2.88 (1.31)	3.11 (0.11)		
6A37-SS 6A37C-SS	1,600 (181)	3,200 (362)	10,374 (67,367)	7,400	6,700	3	0.013 (0.3)	0.070 (1.8)	3.6 (1.6)	3.6 (1.6)	6.04 (2.74)	6.62 (28.13)		
6A45-SS 6A45C-SS	2,200 (282)	5,000 (564)	19,138 (123,909)	6,100	5,600	3	0.015 (0.4)	0.090 (2.3)	6.4 (2.9)	14.6 (42.7)	7.65 (3.47)	78.0 (32.6)		
6A52-SS 6A52C-SS	3,260 (402)	7,120 (804)	28,049 (168,656)	5,200	4,800	3	0.018 (0.5)	0.110 (2.8)	10.5 (4.6)	32.4 (94.8)	11.93 (5.41)	38.9 (153.8)		

### Clamp Style Hub

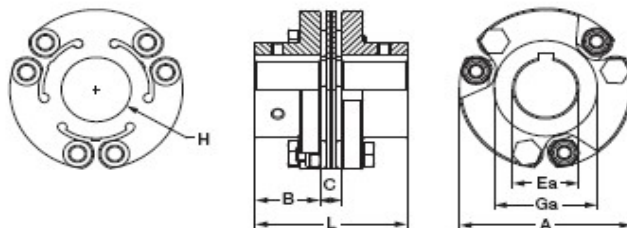


### Dimensional Information

	Max Bore							
	A	B	C	D	E		F	L
	Inch (mm)	Inch (mm)	Inch (mm)	Inch (mm)	w/wavy (mm)	w/o wavy (mm)	Inch (mm)	Inch (mm)
6A30C-SS	3.00 (76.2)	1.25 (31.8)	0.46 (11.7)	0.69 (17.5)	1.12 (28)	1.37 (35)	2.63 (66.8)	2.98 (75.2)
6A37C-SS	3.75 (95.3)	1.44 (36.6)	0.52 (13.2)	0.75 (19.1)	1.50 (38)	1.87 (48)	3.25 (82.6)	3.40 (86.4)
6A45C-SS	4.50 (114.3)	1.69 (42.9)	0.58 (14.7)	0.75 (19.1)	1.62 (42)	2.00 (50)	3.50 (88.9)	3.98 (100.8)
6A52C-SS	5.25 (133.4)	1.94 (49.3)	0.65 (16.5)	0.88 (22.4)	2.12 (55)	2.62 (65)	4.25 (108.0)	4.52 (114.8)

Performance Note: The torque capacity of keyless clamped hubs is governed by many factors, including shaft hub bore diameter, clamp size, and other installation variables. Keyless coupling hubs with bore sizes less than approximately one-half the maximum bore listed may not transmit the torque rating of the disc pack. Consult factory if your application is of high torque/small shaft variety.

### Set Screw Style Hub



### Dimensional Information

	Max Bore							
	A	B	C	Ea A Hub	Ga A Hub	H	L	X
	Inch (mm)	Inch (mm)	Inch (mm)	Inch (mm)	Inch (mm)	Inch (mm)	Inch (mm)	Inch (mm)
6A30-SS	3.00 (76.2)	1.25 (31.8)	0.46 (11.7)	1.000 (25)	1.71 (43)	1.21 (31)	2.98 (75)	0.30 (9.9)
6A37-SS	3.75 (95.3)	1.44 (36.6)	0.52 (13.2)	1.250 (32)	2.19 (56)	1.31 (34)	3.40 (86)	0.68 (17.3)
6A45-SS	4.50 (114)	1.69 (42.9)	0.58 (14.8)	1.625 (42)	2.69 (68)	1.81 (46)	3.98 (101)	0.91 (23.1)
6A52-SS	5.25 (133)	1.94 (49.2)	0.65 (16.4)	1.875 (48)	3.31 (84)	2.30 (58)	4.52 (115)	0.73 (18.5)

\* "X" dimension is the minimum bolt travel required beyond the hub to disassemble the disc pack from the hubs.

Orbit Antriebstechnik GmbH  
Wilhelm-Mast-Str. 15  
38304 Wolfenbüttel

Fon +49 - 5331 - 9552 - 5 30  
Fax +49 - 5331 - 9552 - 5 33